

19 CLEANING

19.1 GENERAL CLEANING WARNINGS

The following is prohibited:

- Cleaning the machine with water jets.
- Using alcohol or ammonia based detergents or abrasive pads to clean the machine. USE detergents specifically for cleaning coffee machines or crockery only.
- Care must be taken when cleaning the machine and/or installation with detergents to avoid deterioration to components and the environment (more than 90% degradable).
- Clean all parts and components of the machine completely.
- Cleaning and user maintenance shall not be made by children without supervision.



**IMPORTANT:** All maintenance operations must be performed with the machine off and cold and with the main switch in the "O" OFF position. Certain maintenance operations must be performed while the machine is in operation and exercising great care



**IMPORTANT:** To regenerate or service the water softener, follow the instructions in the relative manual.

19.2 ROUTINE MAINTENANCE

Routine maintenance includes all operations which must be performed daily after using the machine.

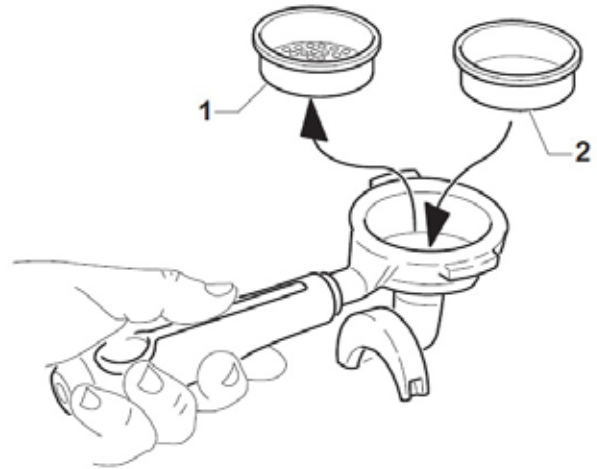
19.2.a AUTOMATIC WASHING OF THE GROUPS



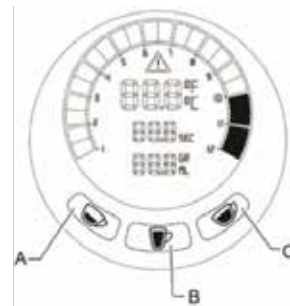
**IMPORTANT:** Automatic washing of the groups is carried out with the coffee machine in operation.

- Remove and empty the portafilter.
- Remove the filter (1), insert the blind filter (2)

and add specific detergent for coffee machines. For quantities, follow the instructions on the detergent pack



- Replace the portafilter on the machine and press buttons (A) and (B) on the group together. The washing cycle starts automatically and the LEDs on buttons (A) and (B) flash.
- At the end of washing, the LEDs on buttons (A) and (B) go off.



- Remove the portafilter and empty the dirt contained in the blind filter by rinsing under running water.
- Put the filter back in the group and repeat the washing cycle without detergent in the blind filter. This rinses the machine.
- At the end of rinsing, remove the portafilter, replace the blind filter with the normal filter and deliver a coffee to eliminate possible unpleasant tastes.



**IMPORTANT:** The washing procedure must be performed for all groups on the machine.

## 19.2.b COMPLETE WASHING OF THE GROUPS

More thorough washing can be performed simultaneously on all the machine's groups.

- To start the procedure, access programming by pressing and holding button (B) on the first coffee group for 10 seconds.
- Then press button (B) on the first group again until the following screen is displayed:



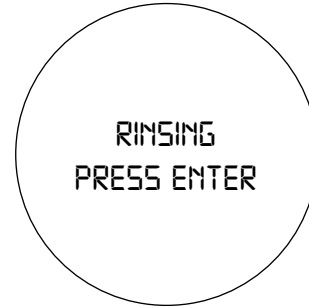
- Select by pressing buttons (A) or (C), then press button (B) to confirm. The following screen will be displayed:



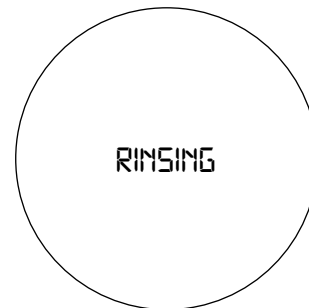
- After inserting the detergent and attaching the portafilters, press button (B) to start washing. The following screen is displayed throughout washing:



After the first washing cycle, the following screen will be displayed:



- Remove the portafilter and empty the dirt contained in the blind filter by rinsing under running water.
- Put the filter back in the group and repeat the washing cycle without detergent in the blind filter. This rinses the machine. The following screen will appear:



- At the end of rinsing, remove the portafilter, replace the blind filter with the normal filter and deliver a coffee to eliminate possible unpleasant tastes.

## 19.2.c DAILY CLEANING

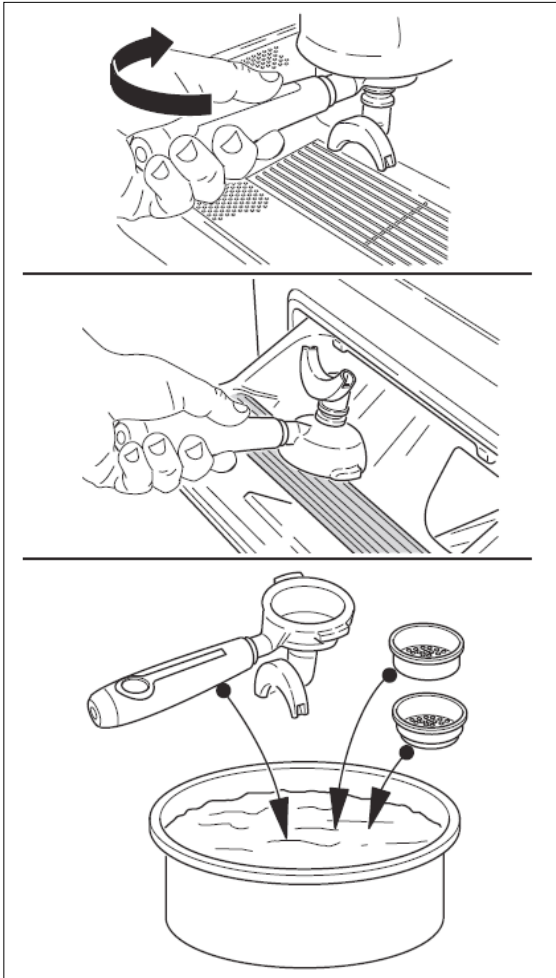


**IMPORTANT: NEVER use corrosive or abrasive detergents; use detergent specifically for cleaning coffee machines or crockery only. NEVER use water jets to clean the machine.**

To clean, proceed as follows:

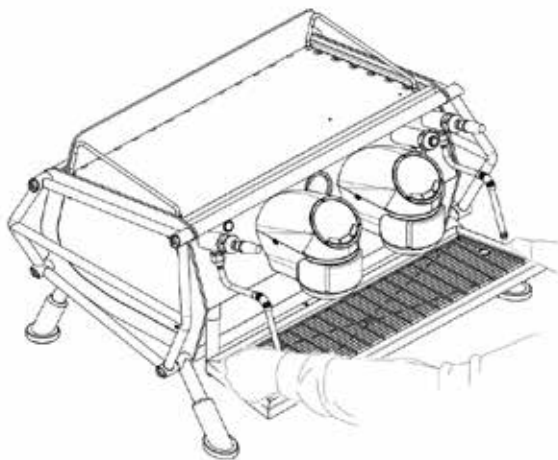
- Remove and empty the portafilters.
- Remove the filters from the portafilters and immerse both in a basin containing specific detergent, leaving them to soak while the machine is inactive.

EN

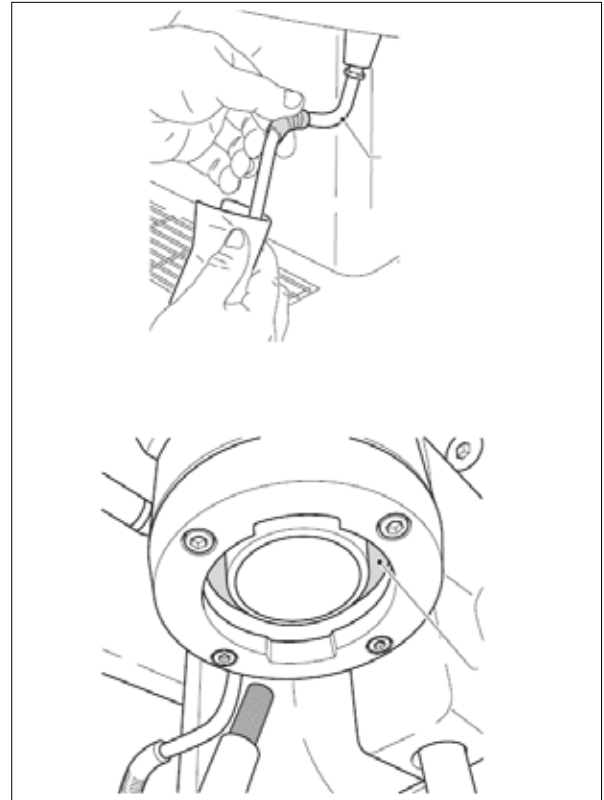


Remove the grille (1) and wash with running water and specific detergent.

After washing, dry thoroughly with a soft cloth, then put back in the machine.



Check there are no encrustations on the steam wands (2), if necessary clean with specific detergents.



Clean the bottom of the group with detergent and clean the gasket with a soft bristled brush (3).

Wipe the outside of the machine with a damp cloth.



**19.3 -SCHEDULED MAINTENANCE (TECHNICIAN)**

Scheduled maintenance includes all the operations which must be carried out at regular intervals to guarantee correct operation of the machine.



**IMPORTANT: All scheduled maintenance operations must be carried out by technical assistance. We recommended signing a maintenance agreement with your local technical assistance service to cover any problems which might arise while using the machine.**



#### 19.4 EXCEPTIONAL MAINTENANCE (TECHNICIAN)

Exceptional maintenance includes all the operations carried out when necessary, for example, to replace worn or broken components.



**IMPORTANT:** All problems other than those listed in the table at the end of chapter 20 require the intervention of a technical assistance service.