



ROCKET

ESPRESSO MILANO

RE DOPPIA

QUICK START GUIDE

1. First step before powering on the machine to remove air from the saturated group:

After connecting the mains water to the machine and allowing it to fill the boiler:

1. Open the vent valve until water flows out of the drain pipe (located under the machine).
2. Close the valve and then turn on the machine.

2. Water renewal and first start-up

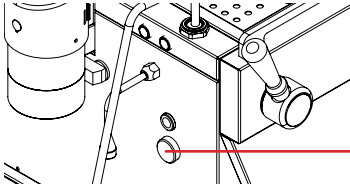


During the warm-up phase of the machine (which varies depending on the model), the pressure vacuum relief valve will release steam for a few seconds until the valve closes.

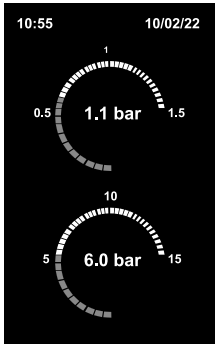


If the machine is left idle for more than 1 week, it is necessary to have the technician replace all of the water in the hydraulic circuits.

- **Switch on the machine:** turn the knob (2) to position '1'. The green lamp will light up to indicate that the machine has been switched on;



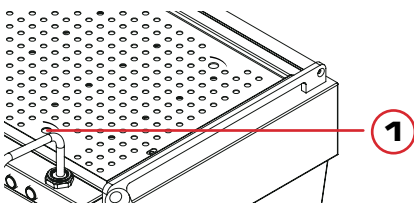
- the machine automatically loads the service boiler;
- the main display screen will indicate the mains pressure and the service boiler pressure:



services boiler pressure

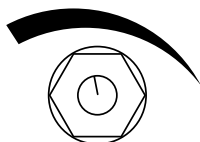
mains water pressure

- Wait for the service boiler to be filled, during the filling of the service boiler the coffee boiler is also filled;
- When you have finished filling the service boiler, open the vent valve (1) on the top of the machine to vent any air in the coffee boiler (turn the valve to ON);



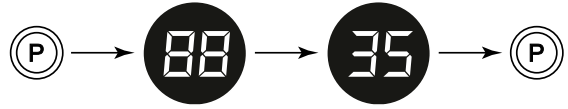
AIR UNLOAD

ON



OFF

- When the air venting is finished, close the valve by turning it back to OFF;
- Make a water dispensing from each group by pressing P . The group displays begin to measure the time; wait until 35" and then stop dispensing by pressing P .



- This phase allows any air in the pipes to be removed.
- The boiler will then start heating. On the display, the boiler temperature increases to 92° (default preset value);
- Wait until the pressure in the boiler reaches the set value (approx. 1.1 - 1.2 bar).



- Operate the steam wands until steam escapes.

Once the procedure is complete, the machine is ready to dispense coffee.



The coffee boiler does not heat up until a first dispensing has been done.



Before using the machine, carry out vacuum dispensing with the filter holders coupled for a few seconds, in order to release any air present in the circuit, allowing the dispensing units to warm up completely.



Before using the machine, make a few coffees for grinding tests and to check the operating pressure of the machine.