



X64SD

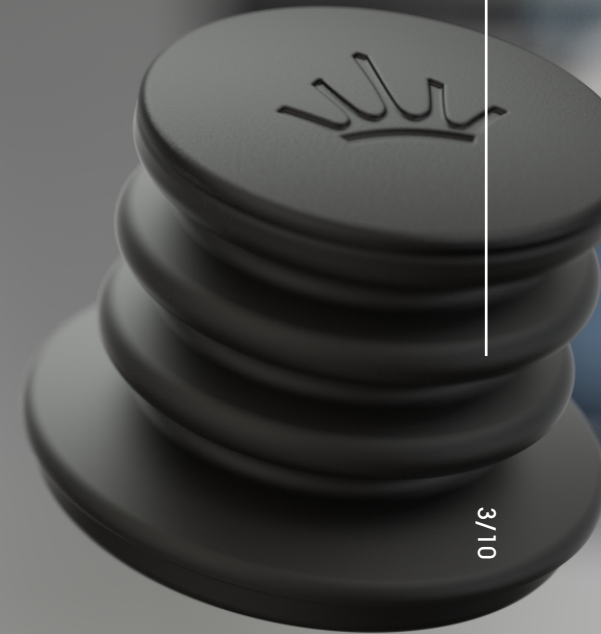
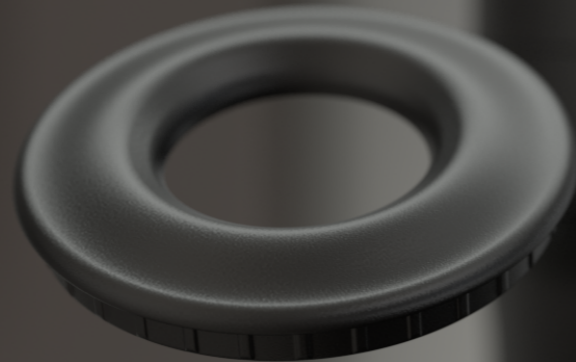
SINGLE DOSE GRINDER



**Engineered to
Impress**

Designed for
Home

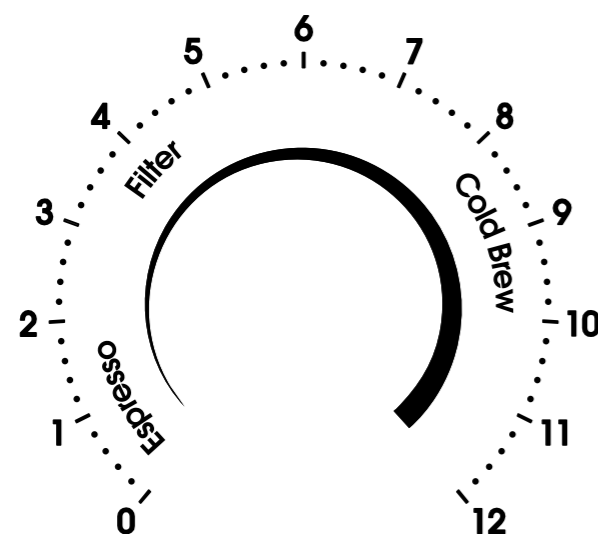
One Grinder, Endless Possibilities



From Espresso to Cold Brew

Experience the freedom of single dosing at its finest while producing always the freshest coffee. Effortlessly switch between grind sizes—from fine to coarse and back again—with precision and ease. At home, every cup is a new opportunity to explore flavor. Grind a decaf espresso for your partner 8 a.m., then switch to a medium grind for a refreshing pour-over in a minute after.

Built for versatility and consistency, the X64 SD Single Dose delivers reliable results every time. Precision-engineered for repeatability, it's the perfect choice for coffee lovers who demand control, flexibility, and exceptional taste in every cup.



Achieve the Perfect Grind Every Time

Precision meets convenience: A built-in grind guide inside the lid helps you easily identify the ideal grind size for your brewing method—whether you're aiming for espresso, pour-over, or french press.

Ultimate Versatility in a Single Grinder

The intuitive dial knob allows effortless customization on a detailed scale from 0 to 12, offering micron-level control for consistently perfect results.





Allround Home Grinder

Repeatable grind size
adjustment for precise results

64 mm Steel Burrs

Even particles for an incredible
taste experience

Zero Retention

No coffee grounds left behind,
fresh dose every time

Reduced Noise

Whisper-quiet grinding,
perfect for early mornings

Fastest Grind

With a minimum output of
3 grams per second

Bellow Included

For those who value
convenience & cleanliness

Technical Details

Voltage / Frequencies / Phases / Nominal power	220-240 V / 50/60 Hz / 1~ / 300 W 120 V / 60 Hz / 1~ / 300 W 100 V / 50/60 Hz / 1~ / 300 W
Idle speed	1950 rpm
Burr diameter	64 mm
Burr material	Special steel
Average grinding capacity*	approx. 2,5-6 g/s (fine - coarse)
Bean hopper capacity	Standard/Anti-Popcorning: 34 g Hopper Extension: 105 g Bellow: 82 g
Dimensions (w x h x d)	14,3 x 24.9 x 25,3 cm
Dimensions of packing (w x h x d)	41 x 31 x 18,5 cm
Net weight	4,8 kg
Gross weight	7 kg
Certifications	CB, CE, KC, PSE, UKCA, SAA, RCM, ETL, ROHS, CCC, NSF
Standard colors	Matte black Matte white
Accessories (included)	Stainless steel dosing cup with funnel Easily swappable grinder toppings: - Hopper Extension (for more capacity) - Bellow (for easiest purging) - Anti-Popcorning (for smooth operations)



*Depends on the grinding goods and the chosen degree of fineness. All measured values under laboratory conditions. Other electric specifications available on request. Subject to change without prior notice.



www.mahlkoenig.com